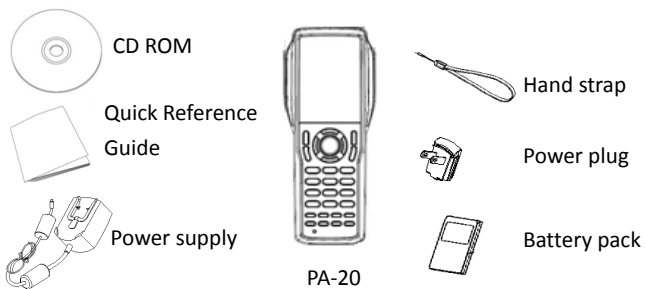


PA-20 Mobile Computer

Quick Start Guide

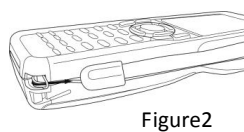
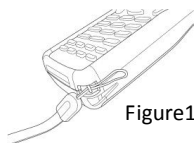
<http://www.argox.com> See User Manual for more information

Depending on the configuration ordered, the PA-20 shipping container may include:

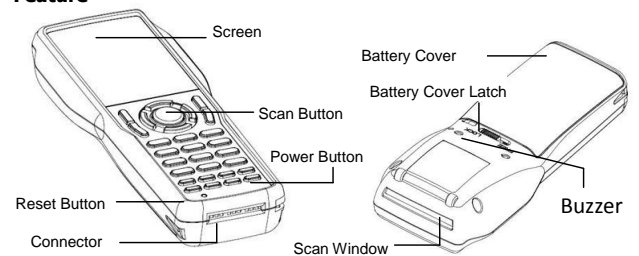


To attach the hand strap

1. Fix the small cord of the strap around the pillar of the terminal. (Figure 1)
Insert the handle of the strap in the thin loop. (Figure 2)
2. The strap is fixed to the terminal. Hold the hand strap around the wrist when carrying the terminal

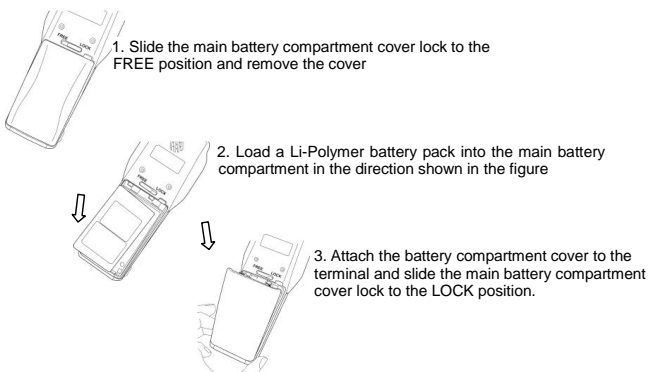


Feature

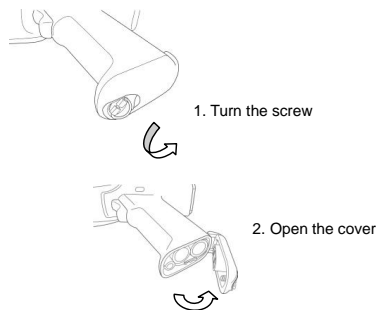


First time initiation of this product; please make sure to charge the main battery for at least **16** hours to ensure a proper charge.

Install or replace the main battery in the terminal

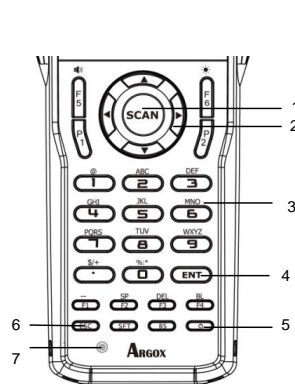


Install or replace the main battery in the gun grip



⚠ Be sure to turn the terminal off before you do this

Keypad and function button



1. Scan key
2. Cursor key
3. 10-key pad
4. Enter key
5. Power key
6. ESC key
7. Reset

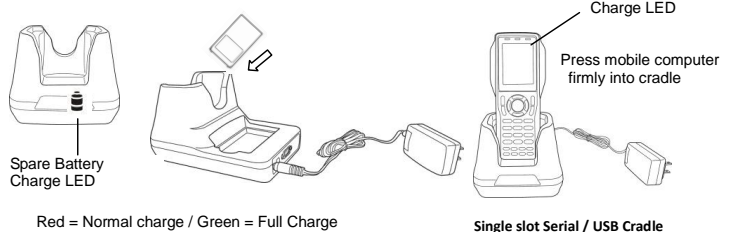
SFT key

Switches between the character input mode and the number input mode [abc][ABC] lit on the LCD screen indicates the character input mode. When [123] is lit, the terminal is in the number input mode.

Function key

- > F1 (-): Inputs the minus (-) sign
- > F2 (SP): Inputs a space
- > F3 (DEL): Deletes a character
- > F4 (BL): Turns the key lights ON and OFF
- > F5 (): Press Power Key first and press F5 next to increase buzzer volume
- > F6 (): Press Power Key first and press F6 next to increase LCD backlight
- > P1: press Power Key first and press P1 next to decrease Buzzer volume and program 1 (for user SDK define)
- > P2: press Power Key first and press P2 next to decrease LCD backlight and program 2 (for user SDK define)

Charging the Battery



Red = Normal charge / Green = Full Charge

Single slot Serial / USB Cradle



49-PA201-001 Rev. A – Apr.2013